

PHAKOS

Looking at surgery through a different lens



Flat Lens – PMMA with Silicone Ring

Plano anterior surface affords a 36-degree field of view of the central posterior pole and vitreous in phakic and pseudophakic eyes.

This lens is ideal for photography.

Code: MV LV40 | Box of 10



30° Prism Lens – PMMA with Silicone Ring

Provides visualisation of the posterior peripheral fundus and vitreous beyond the equator with minimal distortion in phakic, aphakic and pseudophakic eyes.

Code: MV LV45 | Box of 10



Wide Field Lens – PMMA with Silicone Ring

Concave anterior surface facilitates a 48-degree field of view when visualizing the central posterior pole and central vitreous in phakic and pseudophakic eyes.

Code: MV LV41 | Box of 10



Bi-Concave Lens – PMMA with Silicone Ring

83D biconcave lens facilitates viewing the fundus in an air filled vitreous cavity in phakic and pseudophakic eyes.

Code: MV LV42 | Box of 10



Magnifying Lens – PMMA with Silicone Ring

For detailed examination and minute surgical manipulation of retinal membranes and pseudophakic eyes.

Code: MV LV43 | Box of 10



Wide field lens single use sterile – PMMA

Single use wide field:

- Small, easy to manipulate on the eye
- Removable soft ring
- Wide field
- Use with inverter.

For vitreoretinal detachment and giant tears.

Code: MV LV48 Panoramic | Box of 5



Gonioprism Lens – PMMA

The Gonioprism provides clear images of the anterior chamber angle suitable for glaucoma surgery and goniotomy.

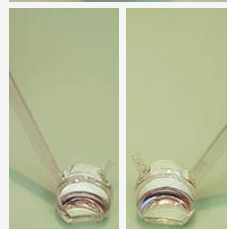
The superior quality of contact lens delivers sharp, high-resolution views.

The reduced profile of the lens is also useful for post-operative paediatric gonioscopy.

Now used with the implant of I-Stent and similar Glaucoma implant devices.

Available in interchangeable Left and Right Handle – Universal.

Code: MV LV50 | Box of 5



Distributed by:

Medix21 Surgical

29 Jarden Mile Ngauranga 6035

p 0800 633 4921 / 021 734 762

e camille@medix21.co.nz

w medix21surgical.co.nz